

STATION : TURNCOAT



Enter at Gate: Wednesday to Sunday 5pm-12am

MENU

BOOTLEG BURGER SLIDERS \$17

Custom Beef Blend, Tillamook Cheddar, House Pickles,
Bibb Lettuce, Sauteed Onions, Black Garlic Aioli

ON THE LAMB \$24

Garlic Tzatziki, Grilled Red Onion, Feta, Mint,
Bib Lettuce, Potato Roll, Fries

DON PAPAS \$14

Duck Fat Fries, Spicy Basil Sauce, Black Garlic Aioli,
Revival Sauce

SLEEP WITH THE FISHES* \$22

Sushi Grade Tuna, Avocado Mash, Spicy Mayo, Scallions,
Sesame Seeds, Wonton Tacos

SHROOMING \$17

Wine Braised Mixed Mushrooms, Thyme, Garlic, Mixed Greens,
Wonton Tacos

GOT POPPED \$14

Popcorn, Foie Gras & Duck Fat Butter, Truffle Salt

DEAL WITH THE DEVIL \$17

Crispy Deviled Eggs, Candied Pork Belly, Scallions, Black Caviar

GOT PINCHED* \$27

Butter Poached Lobster, Chives, Toasted New England Roll

RUN A FOWL \$17

Sliders, Crispy Chicken Thigh, House Pickles,
Revival Sauce

Booking: 240-800-3823



*This menu may contain raw or undercooked seafood, shellfish or eggs. Consuming raw or undercooked seafood, shellfish or eggs may increase your risk to food borne illness

STATION : TURNCOAT



Enter at Gate: Wednesday to Sunday 5pm-12am

DESSERTS

MANGO RASPBERRY LAYERED CAKE \$12

Mango Sauce, Fresh Raspberries, Chantilly Cream

TIRAMISU \$12

Lady Fingers, Espresso, Chocolate Shavings,
Chantilly Cream, Gluten Free

THREE CHOCOLATES CHARLOTTE \$12

Dark, Milk & White Chocolate Mousse, Shaved Almonds,
Chocolate Sauce, Chantilly Cream

RASPBERRY WHITE CHOCOLATE CAKE \$12

Raspberry Glaze, Fresh Raspberries, Chantilly Cream

Booking: 240-800-3823

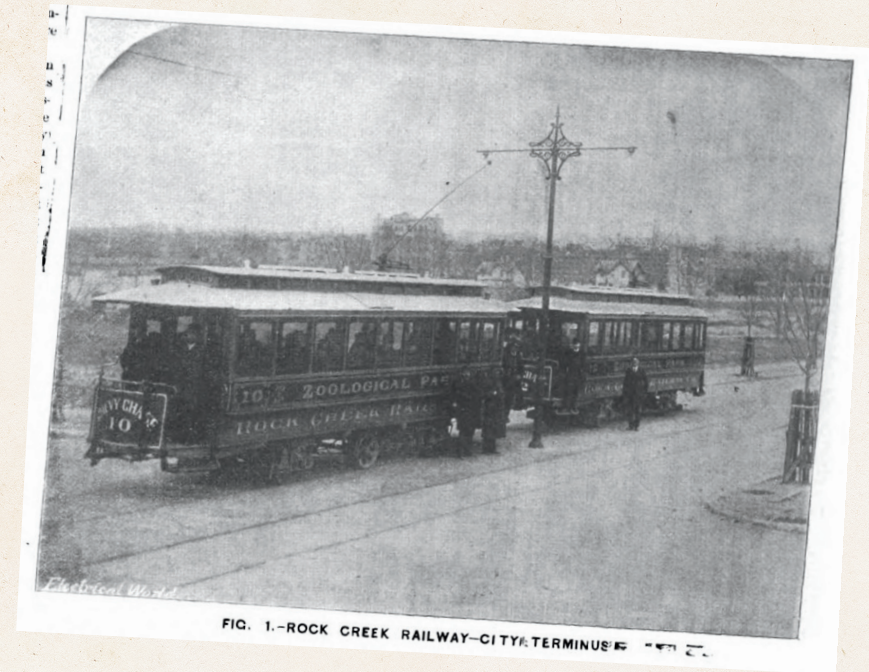




A picture painted of the original Rock Creek Railway Company might show the industrious development of travel and commerce in turn of the 20th century Washington D.C. This illustration might also show the connection of historic city neighborhoods such as Shaw and Cardoza with the developing suburban sprawls of Chevy Chase and Bethesda. It might even reveal the complexity of early 20th century streetcar companies before Congress' attempt to consolidate the industry in 1895. But it might not shed much light on the other story, the secret story of the Rock Creek Railway Line...

The Gibby \$17

Lustau Blanco, McClintock Gardener's Cask-Gin, House-Pickled Gibson Onion



Crabappletini* \$19

Sparkling Cider Syrup, Blue Crab Sous Vide Dry Vermouth, Bluecoat Gin, Crab Claw & Furikake Rim

While it is no secret that Maryland was considered a "wet" state during the tumultuous 13 years of the Volstead Act, most of the notoriety and lawlessness occurred between the St. Mary's peninsula, Laurel and Baltimore.

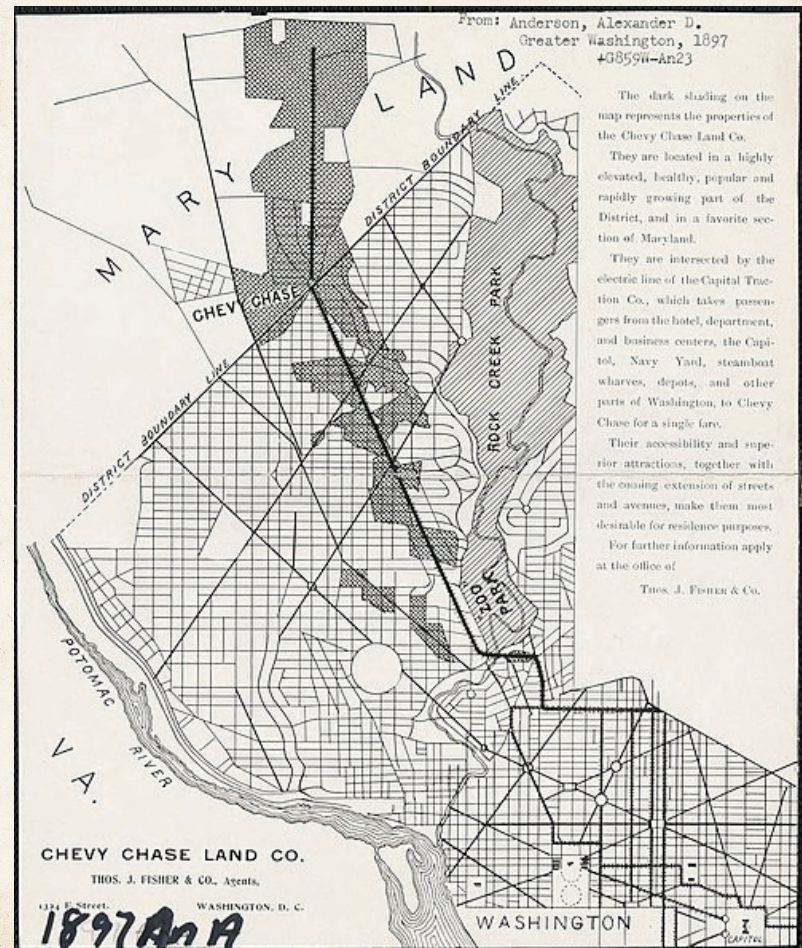


Timekiller \$18

*Barr Hill Tomcat, Orange,
Pineapple, Cream of coconut,
Nutmeg & Caramelized Pineapple*

Tranquility Cup \$16

*Root Spice Syrup, Lemon Juice,
Suntory Toki Whisky,
Hot Water, Lemon Twist*



This notoriety allowed other parts of the state to profit from scandalous behavior while drawing significantly less national (and law enforcement) attention.

Black Gold* \$19

Chocolate Bitters, Pure Maple Syrup, Black Citrus, Aquafaba, Virginia Highland Malt Whisky, Gold Cake Rim



Billie Holiday \$17

Orange Bitters, Prickly Pear Syrup, Catoctin Creek Rye Whisky, Orange Twist

While beer, wine and liquor was readily available along the Route 1 corridor, accessibility on the western side of the state was more limited. This created an opportunity for DC-area gangs, including the Foggy Bottom Gang, to bring booze into the city via the Potomac River.



Boot-Legger \$18

*Chocolate & Orange Bitters,
Turbinado Syrup,
Guanciaie-Infused Old Overholt Rye,
Smoketop Cherry Wood Smoke*

The Red Carpet \$18

*Tenth Ward Absinthe Atomizer,
Peychaud's Bitters,
Lemon Verbena Hibiscus Syrup,
McClintock White Whiskey*



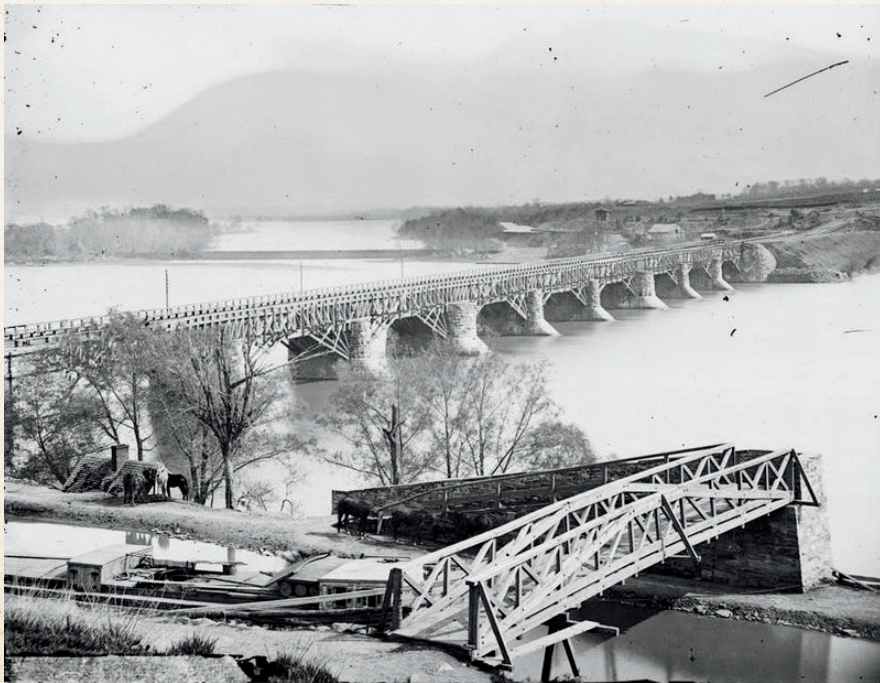
Repercussions in Case
Will 'Rock City,' Is
Prediction.

Gambler Slain
In Gun Attack at

From the river these gangs looked to distribute their booze to the growing suburbs – including on the by-then lightly traveled and lightly monitored Rock Creek Railway

Bees Teas \$17

*Licor43, Apple Honey, Bar Hill
Tomcat Gin, Aquafaba,
Chilled World Peace Tea*



Coppers & Gangsters \$17

*Orgeat, Lemon Juice, Empress 1908
Gin, Creamsicle Foam*



Rumors persist that Railway conductors were known to “turn their coats” inside out at random times, a subtle signal to passengers “in the know” that purchases of a prohibited nature could be made. To this day these rumors have not been proven – though some long-time DC suburb residents tell stories about their grandparents “getting a bottle or two” on the old Rock Creek Rail...



Rum Runner \$16

Luxardo Maraschino, Turbinado Syrup, Espresso, Don Q Reserva 7 Rum



Clawfoot Tub \$19

Bluecoat Gin, Housemade Tonic, Fruit Purée, Pineapple Tonic Foam

We welcome you to The Turncoat Speakeasy.

Booze purchase will be available to all passengers during your journey. Imbibe with us in comfort, and though the drinks may taste illegal, we encourage you to rest easy in the knowledge that the Volstead Act is long dead and the tracks are all clear ahead.

University Graduate \$10

*Element Blueberry Rosemary Shrub Syrup,
Lemon Juice, Aquafaba,
Martinelli's Sparkling Cider, Edible Flower*

N/A

N/A



Sodi Fowntan \$8

RSS, Heavy Cream, Soda Water

N/A



STATION : TURNCOAT



Enter at Gate: Wednesday to Sunday 5pm-12am

BEER

TALL BOY DR. JUICY IPA \$8
PILSNER URQUELLE \$7
DUCHESS DE BOURGOGNE \$15
ABBAYWOOD SLICK SHOES PORTER \$8

WINE

	GLASS	BOTTLE
CHARDONAY, HARTFORD COURT	\$17	\$68
RIESLING, HEINZ EIFEL KABINETT	\$11	\$44
MERLOT, BEAU VALLON	\$19	\$76
MALBEC, ZUCCARDI Q	\$16	\$64
AMARONE, LA GIARETTA	\$25	\$99
SAUTERNES, CHATEAU LES JUSTICES	\$18	\$72
CREMANT D'ALSACE, WOLFBERGER	\$15	\$60
SPARKLING ROSE, GRAHAM BECK ROSE	\$16	\$64
GEYSER PEAK SAUVIGNON BLANC	\$10	\$40
ANNABELLA CHARDONNAY	\$13	\$52
PALACIO DEL BURGO RIOJA TINTO	\$10	\$40
FRANCISCAN ESTATE CALIFORNIA CABERNET	\$12	\$48

Booking: 240-800-3823

